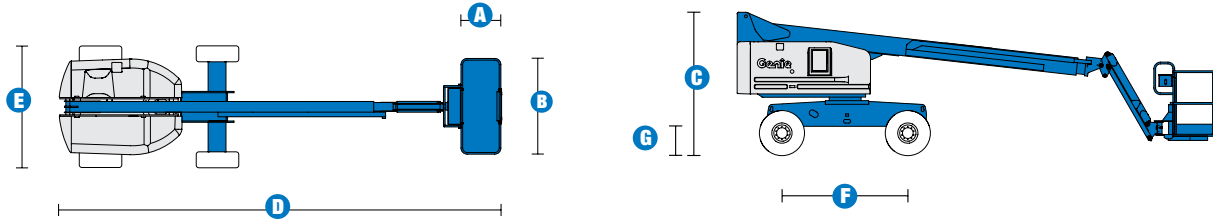


Specifications



MODEL S™-45

MEASUREMENTS	Metric	US
Working height maximum*	15.72 m	51 ft
Platform height maximum	13.72 m	45 ft
Horizontal reach maximum	11.18 m	36 ft 8 in
Below ground reach	1.50 m	4 ft 11 in
A Platform length	0.91 m	3 ft
B Platform width	2.44 m	8 ft
C Height - stowed	2.49 m	8 ft 2 in
D Length - stowed	8.48 m	27 ft 10 in
Length - transport (jib tucked under)	6.80 m	22 ft 4 in
E Width: standard tyres	2.30 m	7 ft 6 in
F Wheelbase	2.20 m	7 ft 3 in
G Ground clearance - centre	0.32 m	1 ft 0.5 in

PRODUCTIVITY

Lift capacity	227 kg	500 lbs
Platform rotation	160°	160°
Vertical jib rotation	135°	135°
Turntable rotation	360° continuous	
Turntable tailswing	0.86 m	2 ft 10 in
Drive speed - stowed	7.7 km/h	4.8 mph
Drive speed - raised or extended	1.1 km/h	0.68 mph
Gradeability - stowed**	40%	40%
Turning radius - inside	2.00 m	6 ft 8 in
Turning radius - outside	4.78 m	15 ft 8 in
Controls	12V DC proportional	
Tyres - RT lug - Foam filled	12-16.5 in NHS	

POWER

Power source	Deutz D2011L03i 3 cylinder diesel 34.3 kW (46 hp)	
Auxilliary power unit	12V DC	
Hydraulic tank capacity	170 L	45 gal
Fuel tank capacity	125 L	33 gal

WEIGHT

Weight***	7,151 kg	15,765 lbs
-----------	----------	------------

STANDARD COMPLIANCE

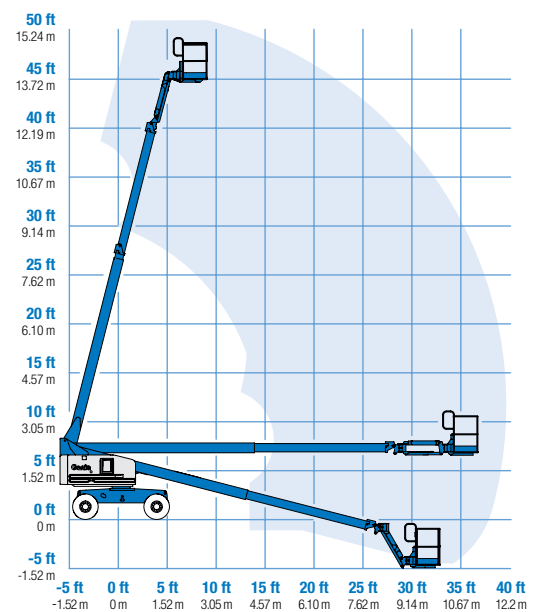
ANSI A92.6, CSA B354.2, CE Compliance, AS 1418.10

* The metric equivalent of working height adds 2 m to platform height. U.S adds 6 ft to platform height.

** Gradeability applies to driving on slopes. Gradability may vary depending on the weight of options installed on machine. See operators manual for details regarding slope ratings.

*** Weight will vary depending on options and/or country standards.

RANGE OF MOTION S™-45



Features

STANDARD FEATURES

MEASUREMENTS

S™-45

- S™-45 has 15.72 m (51 ft) working height
- S™-45 has 11.18 m (36 ft 8 in) horizontal reach
- Up to 227 kg (500 lbs) lift capacity

PRODUCTIVITY

- 2.44 m (8 ft) steel platform
- 1.52 m (5 ft) jib boom with 135° working range
- 4WD Positive traction drive
- Full-time active oscillating axle
- Fully proportional controls
- 360° continuous turntable rotation
- Foam-filled Rough Terrain tyres
- Two speed wheel motors
- Closed-loop hydrostatic drive
- Engine protection package
- Auto engine fault shutdown
- Drive enable system
- Wire braided hose
- Hydraulic oil cooler
- Intake air heater
- Self-leveling platform
- Hydraulic platform rotation
- Swing-out engine tray
- Engine gauge package
- Locking turntable covers
- Foot switch time out
- Lockable platform control box covers
- Thumb rocker steer
- Tilt alarm
- Dual flashing beacons
- Electric horn
- Motion alarm
- Hour meter

POWER

- Deutz Diesel 36 kW (49 hp)
- 12V DC auxiliary power

OPTIONS & ACCESSORIES

PRODUCTIVITY

- Air line to platform
- Platform work lights
- Front driving lights
- Platform swing gate
- Half mesh platform inserts with swing gate
- Platform rail pinch guard
- Hostile environment packages
- Deluxe aircraft protection package
- Fluorescent tube caddy
- Tool tray
- Mine spec option
- 1.8 m (6 ft) steel platform

POWER OPTIONS

- Cold start packages
- 7 kVA hydraulic generator (240 V/50 Hz)
- 240 V power to platform



Genie Australia – Toll free number 1800 788 633

Brisbane (Head Office)
33 Kimberley Street
Darra QLD 4076

Sydney
74 Glendenning Road
Glendenning NSW 2761

Melbourne
374 Hammond Road
Dandenong VIC 3175

Perth
126 Sheffield Road
Welshpool WA 6106

Genie United States Distributed by:

18340 NE 76th Street
P.O. Box 97030
Redmond, Washington
98073-9730

Effective Date: April 2012. Product specifications and prices are subject to change without notice or obligation. The photographs and/or drawings in this document are for illustrative purposes only. Refer to the appropriate Operators' Manual for instructions on the proper use of this equipment. Failure to follow the Operators Manual when using our equipment or to otherwise act irresponsibly may result in serious injury or death. The only warranty applicable to our equipment is the standard written warranty applicable to the particular product and sale and we make no other warranty, express or implied. Products and services listed may be trademarks, service marks, or trade names of Terex Corporation, Terex South Dakota, Inc., and/or their subsidiaries in the USA and other countries. All rights reserved. Terex is a registered trademark of Terex Corporation in the USA and many other countries. Genie is a registered trademark of Terex South Dakota, Inc. in the USA and many other countries. ©2009 Terex Corporation.