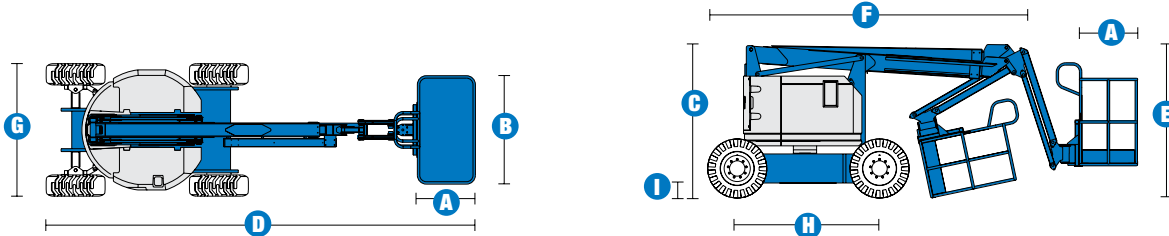


# Specifications



MODEL	Z™-34/22 IC	
MEASUREMENTS	Metric	US
Working height maximum*	12.62 m	40 ft 10 in
Platform height maximum	10.62 m	34 ft 10 in
Horizontal reach maximum	6.78 m	22 ft 3 in
Up and over clearance maximum	4.57 m	15 ft
<b>A</b> Platform length	0.76 m	2 ft 6 in
<b>B</b> Platform width	1.42 m	4 ft 8 in
<b>C</b> Height - stowed	2.06 m	6 ft 9 in
<b>D</b> Length - stowed	5.66 m	18 ft 7 in
<b>E</b> Storage height	2.29 m	7 ft 6 in
<b>F</b> Storage length	4.11 m	13 ft 6 in
<b>G</b> Width	1.85 m	6 ft 1 in
<b>H</b> Wheelbase	1.88 m	6 ft 2 in
<b>I</b> Ground clearance - centre	0.17 m	6.5 in

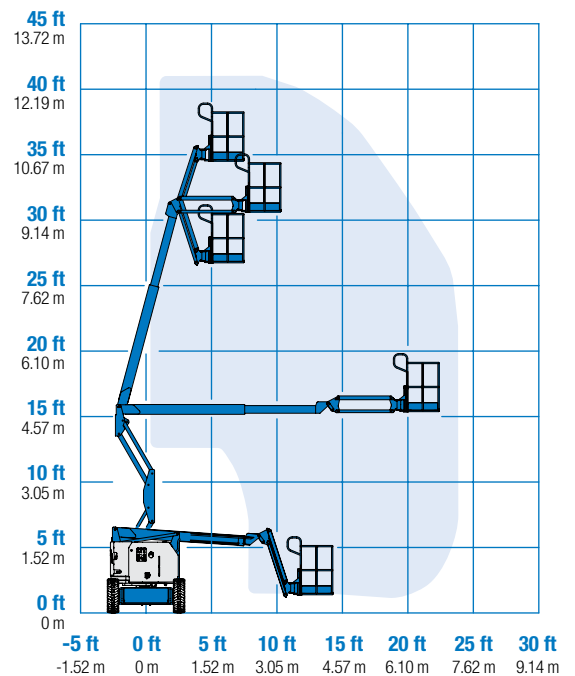
PRODUCTIVITY		
Lift capacity	227 kg	500 lbs
Platform rotation	180°	180°
Vertical jib rotation	139°	139°
Turntable rotation	355° non-continuous	
Turntable tailswing	zero	zero
Drive speed - stowed	4.8 km/h	3.0 mph
Drive speed - raised**	1.1 km/h	0.68 mph
Gradeability - stowed***	45%	45%
Turning radius - inside	1.80 m	5 ft 11 in
Turning radius - outside	4.11 m	13 ft 6 in
Controls	12V DC proportional	
Tyres - foam-filled	10 x 16.5 in NHS	

POWER		
Power source	Kubota D-1105 3-cylinder diesel 19.4 kW (26 hp)	
Auxiliary power unit	12V DC	12V DC
Hydraulic tank capacity	71.9 L	19 gal
Fuel tank capacity	34.1 L	9.0 gal

WEIGHT****		
	4,854 kg	10,701 lbs

STANDARDS COMPLIANCE	ANSI A92.5, CSA B354.4, CE Compliance, AS 1418.10
----------------------	---

## RANGE OF MOTION Z™-34/22 IC



\* The metric equivalent of working height adds 2 m to platform height. U.S. adds 6 ft to platform height.  
 \*\* In lift mode (platform raised), the machine is designed to operate on firm, level surfaces only.  
 \*\*\* Gradeability applies to driving on slopes. See operator's manual for details regarding slope ratings.  
 \*\*\*\* Weight will vary depending on options and/or country standards.

# Features

## STANDARD FEATURES

### MEASUREMENTS

#### Z™-34/22 IC

- 12.62 m (40 ft 10 in) working height
- 6.78 m (22 ft 3 in) horizontal reach
- 4.57 m (15 ft) up and over clearance
- Up to 227 kg (500 lbs) lift capacity

### PRODUCTIVITY

- 1.42 m (4 ft 8 in) steel platform
- 4WD
- Rough terrain foam-filled tyres
- 1.22 m (4 ft) jib with 139° working range
- Self-leveling platform
- Hydraulic platform rotation
- Fully proportional controls
- Drive enable
- Horn
- Hour meter
- Tilt alarm
- Descent alarm
- 355° non-continuous turntable rotation
- Locking turntable covers
- Zero tailswing and front arm swing
- Two speed wheel motors
- Engine gauge package
- Alarm package
- Dual flashing beacons

### POWER

- 12 V DC auxiliary power
- Kubota D-1105 3-cylinder diesel  
18 kW (25 hp)

## OPTIONS & ACCESSORIES

### PRODUCTIVITY

- Platform swing gate
- Half-mesh platform inserts with swing gate
- Air line to platform
- Fire resistant hydraulic oil
- Biodegradable hydraulic oil
- Basic hostile environment kit
- Tool tray
- Fluorescent tube caddy
- Platform work lights
- Lockable platform control box cover
- Front driving lights
- Industrial non-marking foam-filled tyres

### POWER OPTIONS

- 240 V power to platform
- Cold Weather Package
- Retained key selector switch



## Genie Australia – Toll free number 1800 788 633

**Brisbane (Head Office)**  
33 Kimberley Street  
Darra QLD 4076

**Sydney**  
74 Glendenning Road  
Glendenning NSW 2761

**Melbourne**  
374 Hammond Road  
Dandenong VIC 3175

**Perth**  
126 Sheffield Road  
Welshpool WA 6106

## Genie United States Distributed by:

18340 NE 76th Street  
P.O. Box 97030  
Redmond, Washington  
98073-9730

Effective Date: April 2012. Product specifications and prices are subject to change without notice or obligation. The photographs and/or drawings in this document are for illustrative purposes only. Refer to the appropriate Operators' Manual for instructions on the proper use of this equipment. Failure to follow the Operators Manual when using our equipment or to otherwise act irresponsibly may result in serious injury or death. The only warranty applicable to our equipment is the standard written warranty applicable to the particular product and sale and we make no other warranty, express or implied. Products and services listed may be trademarks, service marks, or trade names of Terex Corporation, Terex South Dakota, Inc., and/or their subsidiaries in the USA and other countries. All rights reserved. Terex is a registered trademark of Terex Corporation in the USA and many other countries. Genie is a registered trademark of Terex South Dakota, Inc. in the USA and many other countries. ©2009 Terex Corporation.